

# Kirwan State High School

## Queensland State School Reporting

### 2013 School Annual Report



Postal address	PO Box 33 Thuringowa Central 4817
Phone	(07) 4773 8111
Fax	(07) 4773 8100
Email	the.principal@kirwanshs.eq.edu.au
Webpages	Additional reporting information pertaining to Queensland state schools is located on the <a href="#">My School</a> website and the <a href="#">Queensland Government data</a> website.
Contact Person	Stephen Baskerville

## Principal's foreword

### Introduction

Welcome to Kirwan High's 2013 Annual School Report. This report outlines the school's progress in 2013 toward achieving its mission of providing educational excellence for tomorrow's citizens.

2013 was a year of achievement and progress. Kirwan High was the only school in North Queensland to be accredited as an Independent Public School, allowing the school to have greater autonomy over key processes such as employing new teachers and allocating financial resources. In addition, the Kirwan High School Council was established, with former Speaker of the Legislative Assembly of Queensland Mike Reynolds holding the position of inaugural chair.

There were also many successes for students and staff:

- In 2013 five of our Year 12s achieved entry into medicine at James Cook University.
- Xavier Passi was selected to attend the Rio Tinto Inspire U Engineering Camp.
- Mikkayla McLeod was named Australia Day Young Citizen of the Year; Aiden Barker won an Australia Day Cultural Award and Rebecca Church won the Australia Day Young Sports Award.
- Kyle Walsh was awarded the Premier's Anzac Prize.
- Michelle Liu was selected for MOST, Education Queensland's state-wide program for Musically Outstanding Students.
- Michelle Liu and Mitchell Sheppard were selected for Youth Parliament.
- Yama (Gelum) Banu was selected to attend the National Aboriginal and Torres Strait Islander Health Careers Development Expo
- Letitia Cummins, Yasmin Kubin and Shonay Lomas were selected to attend the Work Experience in Canberra
- Jade Sparks was selected to attend the QMEA Mt Isa Engineering Challenge
- Nina Barnes, Brianna Martin and Bradley Moore gained acceptance into the QUT Vice Chancellors STEM (Science, Technology, Engineering and Mathematics) Regional Camp

## Queensland State School Reporting 2013 School Annual Report



- Teneal Weir, Skye Dodds, Rachel Humphreys and Jade White won the regional Readers Cup Challenge
- Kirwan High's application to participate in the Leading 21st Century School: Engage With Asia Program was successful
- Kirwan High's Science and Humanities departments won a regional Showcase Award for Excellence in Innovation and were selected to be state finalists
- Yama Banu was selected to participate in the National Indigenous Youth Leadership Academy 'Many Voices, One Future' National Gathering
- Sally Althaus was awarded a Creative Generation Excellence Award for Visual Arts
- The Choir won all three sections (Modern, Novelty and Folk) at the Townsville Eisteddfod
- Michelle Liu was awarded The Order of Australia Secondary Schools Citizenship Award
- Paddy MacLeod won the Queensland College of Teachers Excellence in Beginning to Teach Award

These are not just good achievements, they are great achievements. One of our core beliefs and actions is to demand greatness from all students, regardless of their socio economic background or past history. These achievements are testament to our commitment to this belief. In 2014 Kirwan High will continue to be a good school and a great place to be, a school for everyone, a school of excellence and a world class school.

# Queensland State School Reporting

## 2013 School Annual Report



### Kirwan State High Schools Statement of Intent

Our mission is to provide educational excellence for tomorrow's citizens.

Our philosophy is to enable greatness through an inclusive culture underpinned by a mindful school community built on professionalism, continuous improvement and accountability.

We have respectful and supportive relationships with our whole school community, underpinned by the tenets of the United Nations Universal Declaration of Human Rights.

Our core beliefs about student learning are:

- All students can learn.
- All students can achieve at a high level.
- All students are part of a world-wide community of learners.
- All teachers have high expectations of all students.
- All teachers are responsible for student learning.

Our core beliefs about student wellbeing are:

- We all accept responsibility for the wellbeing of others.
- We all deserve to feel safe, valued and respected.
- All students are citizens of the world.
- We must demand "greatness" from everyone.
- "Something is Right" in every person.

Our Kirwan High Scholars are leaders who are:

- Inquiring
- Optimistic
- Inclusive
- Aspirational
- Acting with integrity

# Queensland State School Reporting

## 2013 School Annual Report



### School progress towards its goals in 2013

Attendance	<p>The whole school attendance strategy was strengthened in 2013. This had significant effects with the average attendance rising from 85% to 90% by the end of the year. Indigenous student average attendance also increased significantly from 81.3% to 84.3%. By the end of 2013, Kirwan High's average attendance and Indigenous attendance were above the state average for Secondary Schools.</p>
Quality Outcomes	<p>The school maintained a relentless focus on professional development in the school's pedagogical framework, the Art and Science of Teaching to improve teacher practice. Heads of Department also received professional development on Marzano's coaching model. Both of the strategies were implemented with the specific intent of improving teacher capacity and student results. Consequently, student results continued to exceed like school data.</p> <p>In addition, all staff included an element of the Art and Science of Teaching in their Performance Development Plans.</p>
Leadership Capability	<p>In 2013, the School Wide Leadership Framework continued to be implemented to develop the leadership capabilities of staff and students. Student, staff and parent opinion survey data as well as school generated survey data reported very high levels of satisfaction with the leadership opportunities for students and staff.</p> <p>In 2013, all Heads of Department engaged in a Middle Leadership Development Program which was led by Dr Lyn Bishop, a renowned principal and educational expert.</p>
Global Citizenship	<p>Kirwan High continued to implement a number of curricular and co-curricular programs to support international-mindedness in the school. These programs included embedding Indigenous and Asian perspectives in the curriculum, as well as the Wild Schools and 8s for Change units, both of which involved local and international collaboration.</p> <p>The school worked in partnership with a range of local, national and international charities to engage all staff and students in service learning. In addition, community building events such as the Cultural Fest and the Kirwan High Lip Dub were highly successful.</p>

# Queensland State School Reporting

## 2013 School Annual Report



### Future outlook

In 2014, Kirwan High will be focused on 4 major areas of growth: Attendance, Quality Outcomes, Global Citizenship and Leadership Capability. The specific strategies that will be implemented to achieve this improvement are outlined in the school's Annual Implementation Plan for 2014, available on the Kirwan High Website.

Attendance	<p>Kirwan High will continue to Implement the School Wide Attendance Strategy, with a targeted average attendance rate of 93% and a further target of 72% of students achieving 90% attendance or better. Kirwan High will also continue to implement strategies to close the gap in attendance between Indigenous students and non-Indigenous students, reducing it to 5%.</p>
Quality Outcomes	<p>Kirwan High will retain its strong focus on implementing the pedagogical framework of Dr Robert Marzano- The Art and Science of Teaching. This framework continues to drive the school's commitment to improving student learning outcomes. In 2014, the school will also implement a number of targeted strategies that focus on improving student literacy through the Great Results Guarantee program.</p> <p>A major focus in 2014 is on implementing Junior Secondary and Senior Secondary plans that prepare the school for the arrival of Year 7 into High School in 2015, as well as the shifting of Year 10 into the Senior School.</p> <p>In addition, Kirwan High is seeking accreditation into the Australasian Schools Accreditation Agency (ASAA) in 2014. This process will involve a rigorous review of our existing practices and specific planning to address any identified gaps. If successful, Kirwan High will be the first ASAA accredited school in North Queensland.</p>
Global Citizenship	<p>In 2014 Kirwan High will continue to develop the Global Citizenship of its students. We do this because we strongly believe that all students, as citizens of the 21<sup>st</sup> century, must have the knowledge and skills required to be culturally mature global citizens.</p> <p>With nearly 20% of our students identifying as Indigenous, Kirwan High will continue its strong commitment to reconciliation by celebrating the outstanding contributions of our Indigenous students, whilst also ensuring that all students learn about the past, present and future of Indigenous Australians.</p> <p>Other areas of focus will be ensuring that all students grow their capacity to engage with Asia and, in doing so, develop positive attitudes toward Asia. In order to achieve this all curriculum areas will implement the Microsoft 21<sup>st</sup> Century Skills. The student body will also develop a Charter for Internationalisation and a Reconciliation Statement.</p>

# Queensland State School Reporting

## 2013 School Annual Report



<b>Leadership Capability</b>	<p>Kirwan High will continue to develop the leadership of staff and students through a focus on leadership of self and leadership of others. Within the student community we will implement a Junior Secondary leadership structure, introducing Junior School Captains, Vice Captains, Sports Captains, Music Captains and Indigenous Captains.</p> <p>In addition we will continue to grow student leadership through the House structure. This will include House Captains in the Junior School for the first time, who will work with their Senior counterparts to increase student engagement in House events, such as the Athletics and Swimming Carnivals. Other events planned in 2014 include our annual (and now famous) Lip Dub, the Cultural Fest and the Fun Run Day.</p> <p>At Kirwan High all teachers are leaders and we will continue to develop teacher leadership so that teachers will continue to be able to form positive learning relationships with students.</p> <p>The Middle Leaders Program which was instigated in 2013 will continue to develop the Leadership Capacity of Heads of Department in 2014.</p>
------------------------------	---

## School Profile

Coeducational or single sex: Coeducational

Year levels offered in 2013: Year 8 - Year 12

Total student enrolments for this school:

	Total	Girls	Boys	Enrolment Continuity (Feb – Nov)
2011	2131	1002	1129	87%
2012	2147	1018	1129	87%
2013	2071	1021	1050	89%

Student counts are based on the Census (August) enrolment collection.

Characteristics of the student body:

Kirwan State High School is a coeducational state institution with enrolments from Years 8 to 12. The school draws on a diverse feeder area with many students from outside the immediate catchment attending the school. 20% of the student population identify as Aboriginal and/ or Torres Strait Islander. Over 40 cultural groups are represented in the student cohort.

## Average Class sizes

Phase	Average Class Size		
	2011	2012	2013
Year 7 Secondary – Year 10	26	25	25
Year 11 – Year 12	23	21	21

## School Disciplinary Absences

Disciplinary Absences	Count of Incidents		
	2011	2012	2013
Short Suspensions - 1 to 5 days	153	27	65
Long Suspensions - 6 to 20 days	183	360	219
Exclusions	9	44	25
Cancellations of Enrolment	33	22	16

## Curriculum offerings

Our distinctive curriculum offerings include:

### Academics:

Kirwan High offers an extensive range of subjects in both the Junior Secondary and Senior Secondary school. These include a very strong focus on the core areas of Maths, English, Science and Humanities. Highlights of our academic program include our unique national award winning Literacy program, Maths 1000 (a 1<sup>st</sup> Year University level Maths subject) and various Science excellence programs which have been widely recognised as state of the art practice. The Science programs include significant collaboration with James Cook University, our Centre for Biotechnology Excellence and our Minerals and Energy Academy. The implementation of the Art and Science of Teaching framework is improving student engagement and achievement in all curriculum domains.

Academic Excellence is a specific program for academically gifted students in Junior Secondary. In Kirwan High Academic Excellence we create passionate life-long learners and highly skilful thinkers whose deep knowledge about the world has been enriched through sophisticated extended learning experiences.

### Vocational Education:

The school's performance in VET has recently been recognised with a State Showcase award for 'Excellence in Community Partnerships.' The VET offerings at Kirwan State High School are substantial. In 2013 more than 900 certificates were awarded across twenty-two Certificate I, II and III courses in: Construction; Engineering; Furnishing; Information Technology; Hospitality; Retail; Tourism; Childcare; Business; Visual Arts; Outdoor Recreation; Sport; Sport and Recreation; Sport Coaching; Fitness; Resources and Infrastructure; Engineering, and Work Education. In 2013 we had 58 school based apprentices and trainees in a variety of industry areas including Information Technology, Hospitality, Dental Assistant, Animal Practices, Marine Operations, Fitting and Turning, Business, Hairdressing, Construction (Carpentry), Floor Tiling, Children's Services, Plastering, and Automotive. We have had approximately three hundred school based trainees and apprentices over the past decade. The introduction of the Trade Training Centre has further enhanced our Vocational Education Pathways.

### The Arts:

The Arts are an integral part of the Kirwan High identity. With a diverse range of outstanding opportunities in Dance, Drama, Music, and Visual Arts on offer, our school is widely recognised as an Arts Hub within the North Queensland community. Students choosing to study the Arts at Kirwan High benefit from the passion and expertise of a highly dedicated team of specialist teachers coupled with a wide range of partnerships with community Arts organisations. In 2013 Kirwan High opened Dance Excellence, a first for any North Queensland school. The Arts Department also launched its Arts Centre of Excellence Charter. Kirwan High's annual School Musical is a highlight of the Townsville cultural calendar.

### **Sport:**

Kirwan State High School is nationally recognised for its performance in Sport. Approximately seven hundred students were enrolled in sporting programs in 2013. A major factor in attracting such significant enrolments has been the school's focus on its 'Sports Excellence' Programs which have been established for the past fourteen years. From Years 9 and 10, students progress to the specific Sports Excellence Programs (AFL, Basketball, Hockey, Netball, Rugby League, Touch and Soccer). Kirwan has successfully won nineteen Queensland Championships in sports such as Soccer, Hockey, Indoor Cricket, Touch, Volleyball and Rugby League. These programs allow students to develop in their sport of choice.

### **Extra curricula activities:**

Students say they like coming to Kirwan State High School because it is a friendly school with a wide range of opportunities. These opportunities include an extensive list of diverse extra curriculum programs, including:

- Student Leadership;
- Service Learning Projects;
- Excursions and Outdoor Activities;
- Interact;
- Junior and Senior Debating and Public Speaking;
- School Musical and a range of community, civic and social opportunities.

### **How Information and Communication Technologies are used to assist learning:**

The school was admitted as a Microsoft Pathfinder School in recognition of its achievements in ICT in 2012. Kirwan High has been recognised as a state leader in the use of Information Technologies to teach students and to increase communication with the community. We are seen as one of the leading schools in the state when it comes to smart classrooms and the concept of learning “anywhere anytime”. The school’s purposeful use of technology to enhance student learning was recognised through Education Queensland’s 2013 Showcase Awards as a Regional Winner and State Finalist in the category of Innovation.

Kirwan High has over 1600 computers for students to use and every teacher has a laptop. The wireless network covers 90% of the campus and over a dozen computer laboratories are embedded in subject areas across the school. We believe that students need to be developing tomorrow’s skills today.

The school pioneered the development of a computer based system that allows staff to record, track and analyse key information about students and to provide information to parents and students. The school’s ourSchool and inSchool initiatives allow our school community to utilise technology flexibly and responsively to enhance student learning outcomes and opportunities. The ourSchool and inSchool initiatives have been used as a model for the development of the statewide OneSchool information management system. Kirwan High is a member of the Guiding Coalition of schools piloting OneSchool developments.

### Social climate

The Student Wellbeing Department's key purpose is to create a school community in which all students feel they belong, are safe and are worthwhile citizens. Led by two Heads of Department (Junior School and Senior School), these departments work with staff to improve student attendance, engagement, achievement and to ensure a successful future for each student. In 2013 Kirwan High introduced an Engagement Team, consisting of 5 non-teaching staff who engage extensively with our school community. The Engagement team spend a significant amount of time visiting the homes of students who may need special assistance to attend and succeed at school.

A Housemaster has been assigned to each house to ensure that students have access to a rich selection of activities to support students' academic and social development. The Housemaster's brief is to build a sense of community, and to encourage belonging. Their responsibilities include the organisation of camps, student participation in service learning, community, cultural and sporting events; parent information and Orientation Programs.

The Housemasters work with the Principal and their Heads of Department to implement Student Voice. This program allows students to have input into the life and governance of the school.

In 2013, vertical House Structures were developed and implemented as a strategy to further build community in the school. Students and teachers work in vertical groupings on a number of service learning and other projects to develop students' capacity to make valuable contributions to the local and global communities.

An integral part of the Student Wellbeing Department is the Senior Buddy Program. It is based on the belief that senior members of the school are responsible young adults willing to contribute to mentoring junior students. The excellent work of our Student Wellbeing Department was recognised through Education Queensland's 2011 Showcase Awards as a State Finalist in the category of Leadership.

# Our school at a glance

## Parent, student and staff satisfaction with the school

School Opinion Survey results indicate that parents believe Kirwan High is a safe school with good discipline where their students are treated fairly and are happy to go to school. This was confirmed through our CIS Accreditation, the Education Queensland Teaching and Learning Audit and through school based survey data undertaken as preparation for the ASAA survey. High levels of satisfaction are found throughout the school opinion survey.

### Performance measure (Nationally agreed items shown\*)

Percentage of parents/caregivers who agree that:	2012	2013
their child is getting a good education at school (S2016)	93%	98%
this is a good school (S2035)	95%	100%
their child likes being at this school* (S2001)	100%	100%
their child feels safe at this school* (S2002)	98%	98%
their child's learning needs are being met at this school* (S2003)	93%	98%
their child is making good progress at this school* (S2004)	88%	100%
teachers at this school expect their child to do his or her best* (S2005)	98%	100%
teachers at this school provide their child with useful feedback about his or her school work* (S2006)	100%	97%
teachers at this school motivate their child to learn* (S2007)	90%	98%
teachers at this school treat students fairly* (S2008)	95%	90%
they can talk to their child's teachers about their concerns* (S2009)	95%	95%
this school works with them to support their child's learning* (S2010)	93%	95%
this school takes parents' opinions seriously* (S2011)	97%	97%
student behaviour is well managed at this school* (S2012)	85%	92%
this school looks for ways to improve* (S2013)	97%	100%
this school is well maintained* (S2014)	95%	97%

### Performance measure (Nationally agreed items shown\*)

Percentage of students who agree that:	2012	2013
they are getting a good education at school (S2048)	97%	96%
they like being at their school* (S2036)	97%	96%
they feel safe at their school* (S2037)	98%	95%
their teachers motivate them to learn* (S2038)	97%	98%
their teachers expect them to do their best* (S2039)	99%	98%
their teachers provide them with useful feedback about their school work* (S2040)	95%	94%
teachers treat students fairly at their school* (S2041)	81%	90%

## Our school at a glance

they can talk to their teachers about their concerns* (S2042)	85%	88%
their school takes students' opinions seriously* (S2043)	88%	92%
student behaviour is well managed at their school* (S2044)	72%	81%
their school looks for ways to improve* (S2045)	98%	98%
their school is well maintained* (S2046)	88%	95%
their school gives them opportunities to do interesting things* (S2047)	95%	97%

### Performance measure

Percentage of school staff who agree that:	2013
they enjoy working at their school (S2069)	91%
they feel that their school is a safe place in which to work (S2070)	90%
they receive useful feedback about their work at their school (S2071)	88%
students are encouraged to do their best at their school (S2072)	98%
students are treated fairly at their school (S2073)	85%
student behaviour is well managed at their school (S2074)	73%
staff are well supported at their school (S2075)	75%
their school takes staff opinions seriously (S2076)	85%
their school looks for ways to improve (S2077)	98%
their school is well maintained (S2078)	76%
their school gives them opportunities to do interesting things (S2079)	87%

\* Nationally agreed student and parent/caregiver items were incorporated in the School Opinion Survey in 2012.

# Percentage of respondents who Somewhat Agree, Agree or Strongly Agree with the statement. Due to a major redevelopment of the surveys (parent/caregiver and student in 2012; staff in 2013), comparisons with results from previous years are not recommended.

DW = Data withheld to ensure confidentiality.

### Involving parents in their child's education

The Parents and Citizens' Association meets monthly. Strategies have been put in place to provide a greater focus on informing and involving parents in key educational initiatives.

The school has also recently built on the successful model of our Music Support Group to develop a range of Parent Support Groups in key areas including, Indigenous Education, Special Education and Trade Training. These groups provide opportunities for parents to have meaningful input into specific areas of interest. The school prides itself on having a welcoming atmosphere and readily invites parents to contact the school personally by phone or email. This is supported by a weekly newsletter and regular information nights.

Kirwan High provided three written reports on student progress to parents and students in 2013. There were also two formal parent teacher interviews in 2013, although parent contact with the school was also encouraged at all other times throughout the year.

In late 2013 the school was selected to participate as a trial school for the Department of Education, Training and Employment Parent Portal for State Schools program (also known as QParents). This initiative will allow Parents and Carers to access selected information about their child through a user-friendly web interface and increase parents' engagement in their child's education. Kirwan State High School is the only High School in QLD to be participating in this trial.

### Reducing the school's environmental footprint

In 2013 Kirwan High continued to modernise its facilities and, in doing so, moved toward more energy efficient practices. Significant landscaping of the grounds has also been undertaken in 2013, which has resulted in increased water usage. Where appropriate, native plants that require less frequent watering have been planted.

	Environmental footprint indicators	
	Electricity kWh	Water kL
2010-2011	1,556,198	17,881
2011-2012	1,390,209	30,613
2012-2013	1,340,688	38,166

The consumption data is sourced from the validated utilities expenditure return which the school submits at the end of each financial year. The data provides an indication of the consumption trend in each of the utility categories which impact on the schools environmental footprint.

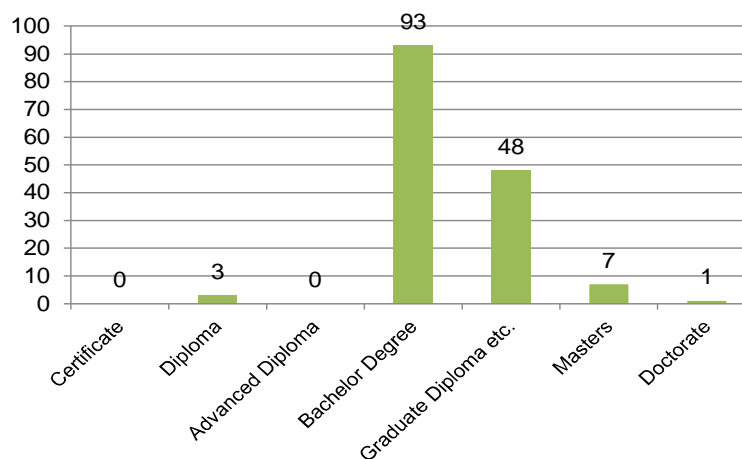
# Our staff profile

## Staff composition, including Indigenous staff

2013 Workforce Composition	Teaching Staff *	Non-teaching Staff	Indigenous Staff
Headcounts	152	59	5
Full-time equivalents	141	46	4

## Qualifications of all teachers

Highest level of attainment	Number of Teaching Staff *
Certificate	0
Diploma	3
Advanced Diploma	0
Bachelor Degree	93
Graduate Diploma etc.	48
Masters	7
Doctorate	1
<b>Total</b>	<b>152</b>



\* Teaching Staff includes School Leaders

\*\* Graduate Diploma etc. includes Graduate Diploma, Bachelor Honours Degree, and Graduate Certificate

## Our staff profile

### Expenditure on and teacher participation in professional development

The total funds expended on teacher professional development in 2013 were \$161 086

The major professional development initiatives were as follows:

- Ongoing Professional Development on:
  - The Art and Science of Teaching
  - Embedding Indigenous and international perspectives in the curriculum
  - Positive Behaviour Support
  - Middle Leadership Development Program
  - 21<sup>st</sup> Century Skills
  - Preparation for Junior Secondary

The proportion of the teaching staff involved in professional development activities during 2013 was 100 %.

Average staff attendance	2011	2012	2013
Staff attendance for permanent and temporary staff and school leaders.	96%	96%	97%

### Proportion of staff retained from the previous school year

From the end of the previous school year, 87% of staff was retained by the school for the entire 2013 school year.

### School income broken down by funding source

School income broken down by funding source is available via the *My School* website at <http://www.myschool.edu.au/>.

To access our income details, click on the *My School* link above. You will then be taken to the *My School* website with the following 'Find a school' text box.

**Find a school**

Search by school name

Search by suburb, town or postcode

Sector  Government  
 Non-government

Where it says 'Search by school name', type in the name of the school you wish to view, and select <GO>. Read and follow the instructions on the next screen; you will be asked to accept the **Terms of Use** and Privacy Policy before being given access to the school's *My School* entry web page.

School financial information is available by selecting 'School finances' in the menu box in the top left corner of the school's entry web page. If you are unable to access the internet, please contact the school for a paper copy of income by funding source.

## Key student outcomes

Student attendance	2011	2012	2013
The overall attendance rate for the students at this school (shown as a percentage).	85%	87%	90%
The overall attendance rate in 2013 for all Queensland state Secondary schools was 88%.			

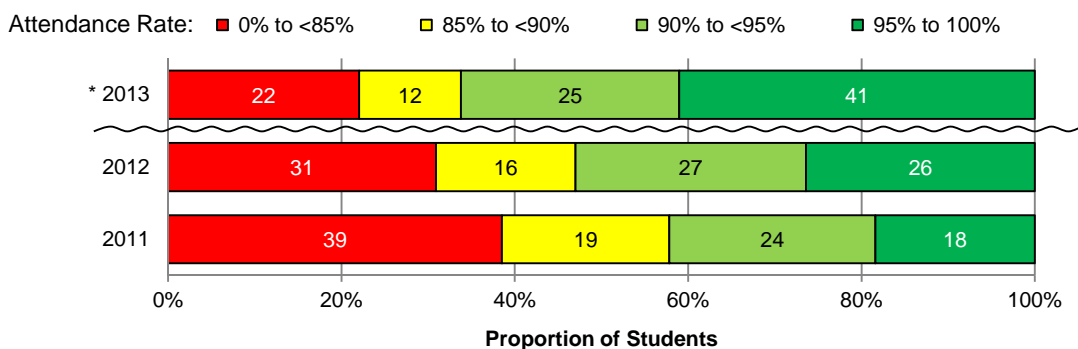
### Student attendance rate for each year level (shown as a percentage)

	Year 1	Year 2	Year 3	Year 4	Year 5	Year 6	Year 7	Year 8	Year 9	Year 10	Year 11	Year 12
2011								89%	85%	83%	84%	85%
2012								90%	87%	86%	86%	87%
2013								91%	89%	89%	90%	91%

DW = Data withheld to ensure confidentiality.

### Student Attendance Distribution

The proportions of students by attendance range.



\* The method for calculating attendance changed in 2013 – care should be taken when comparing data from 2013 to that of previous years.

## Description of how non-attendance is managed by the school

Non-attendance is managed in state schools in line with the DET policies, SMS-PR-029: Managing Student Absences and SMS-PR-036: Roll Marking in State Schools, which outline processes for managing and recording student attendance and absenteeism.

Kirwan High is a mindful school in which education is highly valued as a means for success for individuals and the community as a whole. We have high expectations and demand greatness from all students. To achieve at a high level and attain a successful future, students must attend school regularly. The aim of our attendance strategy is to ensure 'every student is in every class, every day'.

All teachers accept responsibility for implementing this strategy as we believe we are accountable for our students' outcomes. In 2013, the School continued to use ID attend to better student attendance and invested further resources and staffing to address student absence.

This Whole School Attendance Policy is supported by our Indigenous Attendance Policy in which the attendance of all Indigenous students is monitored and followed up weekly by our Indigenous Student Attendance Team.

In 2014, the school developed an Engagement Team, who actively engage with students with low attendance and their families. The team monitor school attendance closely and use home visits to re-engage students in school when required.

School generated survey data shows that 100% of teaching staff agree that improving student attendance is a high priority at Kirwan.

## National Assessment Program – Literacy and Numeracy (NAPLAN) results – our reading, writing, spelling, grammar and punctuation, and numeracy results for the Years 3, 5, 7 and 9.

Our reading, writing, spelling, grammar and punctuation, and numeracy results for the Years 3, 5, 7 and 9 are available via the My School website at <http://www.myschool.edu.au/>.

To access our NAPLAN results, click on the *My School* link above. You will then be taken to the *My School* website with the following 'Find a school' text box.

**Find a school**

Search by school name

Search by suburb, town or postcode

Sector  Government  
 Non-government

Where it says 'Search by school name', type in the name of the school whose NAPLAN results you wish to view, and select <GO>.

Read and follow the instructions on the next screen; you will be asked to accept the **Terms of Use** and Privacy Policy before being able to access NAPLAN data.

If you are unable to access the internet, please contact the school for a paper copy of our school's NAPLAN results.

# Performance of our students

## Achievement – Closing the Gap

In 2013 significant progress was made in closing the gap in the areas of attendance, retention and student learning outcomes.

By the end of 2013 Kirwan High's Indigenous students' average attendance had increased to 84.1%, 5.2% higher than the 2011 value. There has also been a significant improvement in Indigenous student retention. In 2011, 66.1% of Indigenous students in Year 10 were retained by August of the next year and 60.9% from year 11 to 12. By 2013 the year 10-11 figure had increased to 93.7% and the year 11-12 figure to 81.8%

Strong growth in Indigenous student leadership and learning outcomes were also evident. These were a result of the numerous programs that Kirwan High has implemented to support our Indigenous students. These programs include Tracks for Success, an Indigenous student mentoring program and a Marine Science engagement program amongst others.

Based on these achievements in 2013, Kirwan High won the 2014 Queensland Reconciliation Award for the Education Category and also won the North Queensland Showcase Regional Award for Inclusive Education.

<b>Apparent retention rates Year 10 to Year 12</b>	2011	2012	2013
Year 12 student enrolment as a percentage of the Year 10 student cohort.	76%	76%	82%
<b>Outcomes for our Year 12 cohorts</b>	2011	2012	2013
Number of students receiving a Senior Statement.	295	345	351
Number of students awarded a Queensland Certificate Individual Achievement.	0	0	1
Number of students receiving an Overall Position (OP).	120	134	139
Number of students who are completing/continuing a School-based Apprenticeship or Traineeship (SAT).	44	79	15
Number of students awarded one or more Vocational Educational Training (VET) qualifications (incl. SAT).	226	267	211
Number of students awarded an Australian Qualification Framework Certificate II or above.	195	217	205
Number of students awarded a Queensland Certificate of Education (QCE) at the end of Year 12.	243	300	326
Number of students awarded an International Baccalaureate Diploma (IBD).	0	0	0
Percentage of OP/IBD eligible students with OP 1-15 or an IBD.	68%	63%	63%
Percentage of Year 12 students who are completing or completed a SAT or were awarded one or more of the following: QCE, IBD, VET qualification.	98%	97%	97%
Percentage of Queensland Tertiary Admissions Centre (QTAC) applicants receiving an offer.	97%	97%	98%

As at 5 May 2014. The above values exclude VISA students.

## Performance of our students

### Overall Position Bands (OP)

Number of students in each Band for OP 1 to 25.

	OP 1-5	OP 6-10	OP 11-15	OP 16-20	OP 21-25
2011	19	23	40	31	7
2012	18	31	36	33	16
2013	19	28	40	47	5

As at 5 May 2014. The above values exclude VISA students.

### Vocational Educational Training qualification (VET)

Number of students awarded certificates under the Australian Qualification Framework (AQF).

	Certificate I	Certificate II	Certificate III or above
2011	164	190	26
2012	237	210	37
2013	182	204	70

As at 5 May 2014. The above values exclude VISA students.

The following Certificate I courses are offered at Kirwan High:

- Certificate I in Automotive (preparational)
- Certificate I in Construction

### Post-school destination information

At the time of publishing this School Annual Report, the results of the 2014 post-school destinations survey, Next Step – Student Destination Report (2013 Year 12 cohort) for the school were not available. Information about these post-school destinations of our students will be uploaded to the school's website in September.

### Early leavers information

The destinations of young people who left the school in Years 10, 11 and prior to completing Year 12.

Kirwan provides support to early leavers by connecting them to post school options that support them in work or education, which represent the primary areas to which early leavers move to.