

# BYOxLink - How to guide


## Use guest Wi-Fi service to connect student's Windows devices

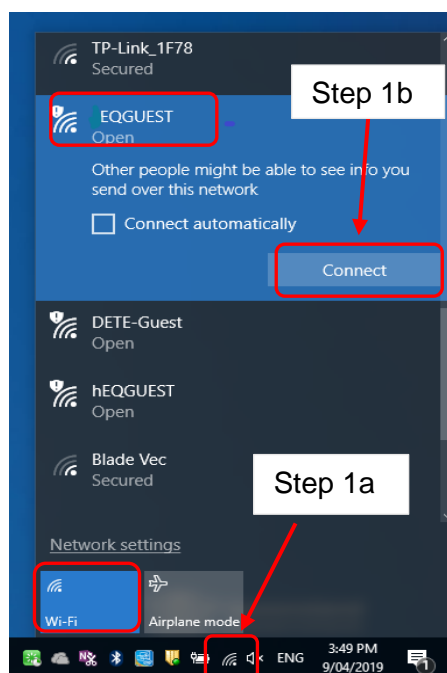
This document explains how a student can connect a Windows device to the school guest Wi-Fi network (EQGUEST) so staff can then complete the Intune enrollment on their device.

The guest Wi-Fi connection is limited and only lasts for eight (8) hours. You may not be able to access some resources such as shared network drives, printers or local school websites through the guest Wi-Fi.

Note: Sign on will only work with a valid school email address (<username>@eq.edu.au). You should use your existing school EQ email address.

### Step 1. Select the Guest Wi-Fi network

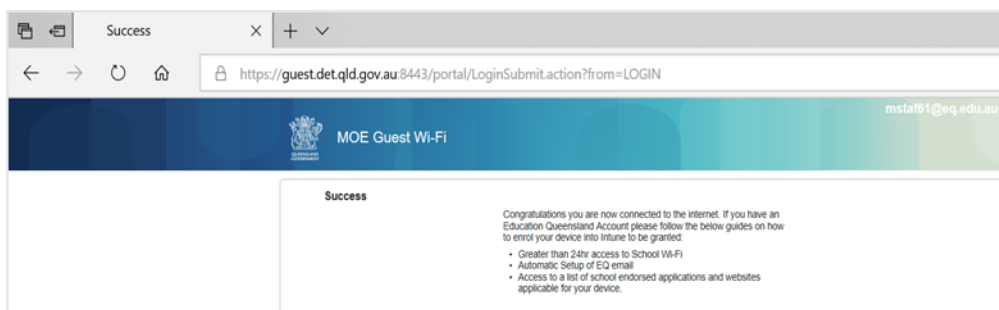
- a. Select the  Wi-Fi icon at the bottom right of the screen.
- b. Scroll the Wi-Fi networks to select EQGUEST. Select Connect



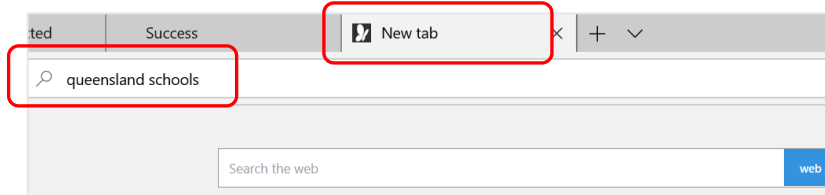
## Step 2. Sign on to the Guest Wi-Fi network

- a. A Sign on page will be displayed
- b. Enter your EQ email address and password
- c. Read and accept the Acceptable Use Policy by ticking the box
- d. Select Sign On.

- e. A success screen will display, close the window.

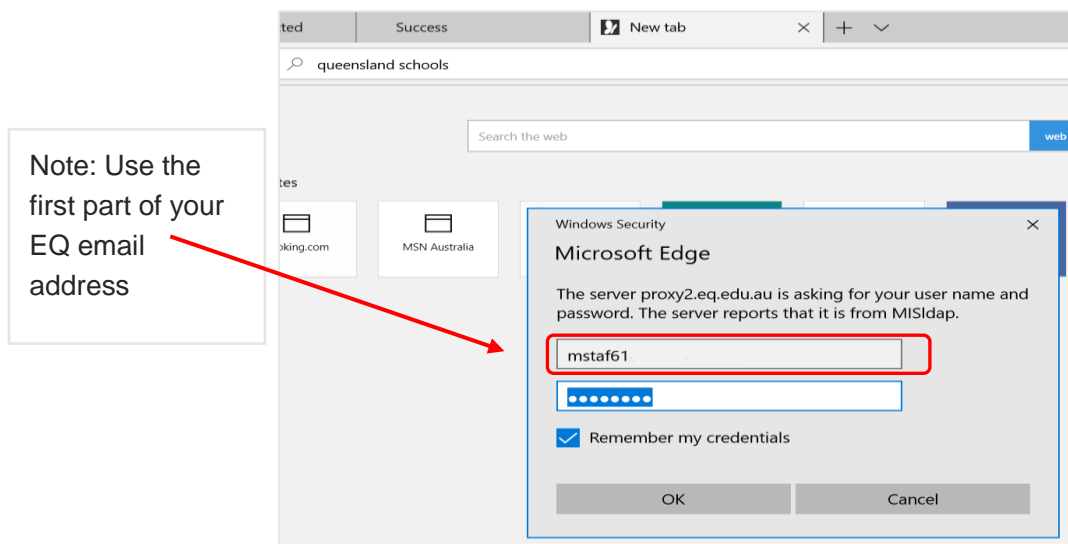


- f. Select a new tab in your browser and type a search in the search bar e.g. Queensland schools.



- g. You will be prompted to enter your EQ username and password. Ensure only the first part of your EQ email address is entered e.g. mstaf61. Type your password. Select OK.





- h. If your internet is not working, contact your school IT support staff for assistance.

### Step 3. Next steps

To access school email, learning applications, printers and shared network drives, you will need to enrol your device into Microsoft Intune. Refer to

[How to guide – Enrol your BYO Windows device into Intune](#) or

[Intune installation video for Windows devices](#)

to complete this process.



# Getting your BYO device ready for school: Intune

## Windows version

Intune is a secure mobile management system that allows you to use school Wi-Fi, emails, learning applications and websites on personal devices.

These instructions will show you how to enrol a BYO Windows device into Intune and install an application. This process may take up to 15 minutes to complete.

Before you start, please have ready the email address and password that has been supplied to you by the school. If you do not have this information, you will not be able to successfully complete the installation. Please contact your school to obtain these details.

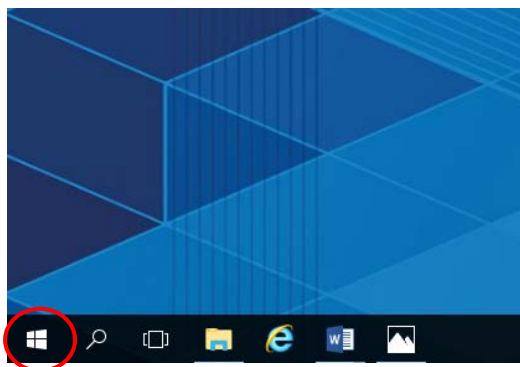
These instructions are for Windows 10.1607 and above. You may find some of the screens look different to the ones provided here if you have an older version of Windows or there are changes made to Intune.

If the installation fails at any time, please re-open the Intune app and try again.

**Please note:** These instructions are provided for testing purposes only as part of a pilot project. If you have any problems with installing Intune or using it afterwards, please contact your school for assistance.

## How to install Intune

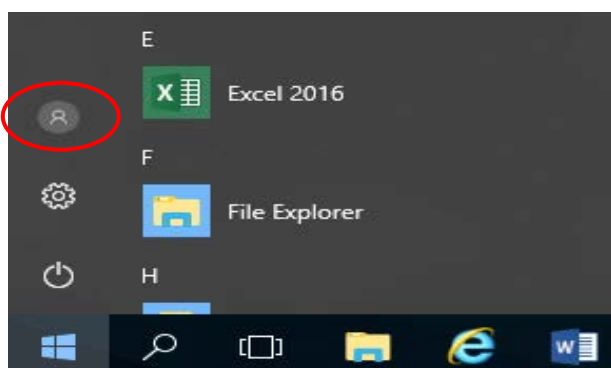
### Step 1



Connect to the internet and select the **Windows icon** at the bottom left hand corner of your screen.

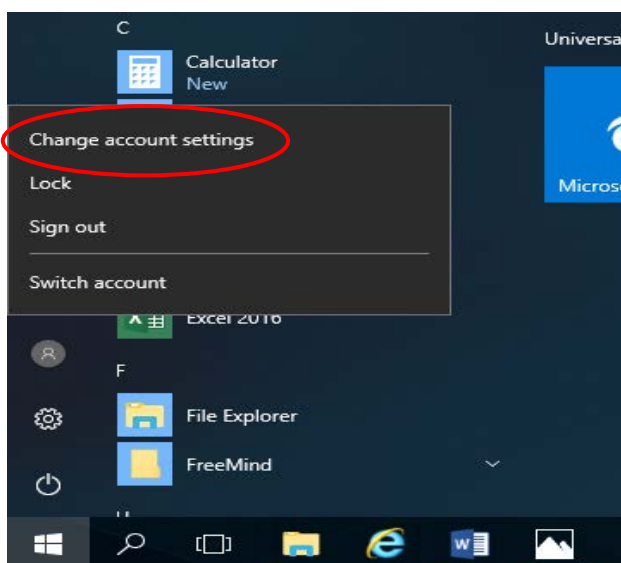


**Step 2**



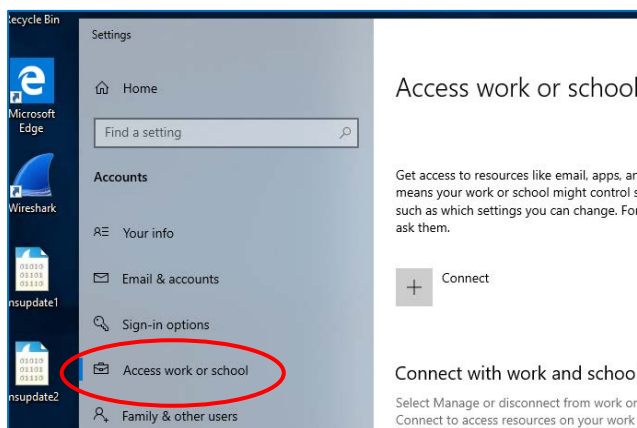
Select the **person** icon.

**Step 3**



Select **Change account settings**.

**Step 4**



Select **Access work or school**.

If your account is already listed, select it and then select **Disconnect**.

Then select **Connect**.



## Step 5

Microsoft account

### Set up a work or school account

You'll get access to resources like email, apps, and the network. Connecting means your work or school might control some things on this device, such as which settings you can change. For specific info about this, ask them.

**Alternate actions:**


These actions will set up the device as your organization's and give your organization full control over this device.

[Join this device to Azure Active Directory](#)

[Join this device to a local Active Directory domain](#)

Enter your school  
@eq.edu.au email address  
and select **Next**.

## Step 6

 Queensland Government Department of Education

### Managed Internet Service

Sign in with your username and password

Username \*

Password \*

I agree to the [conditions of use and privacy statement](#)

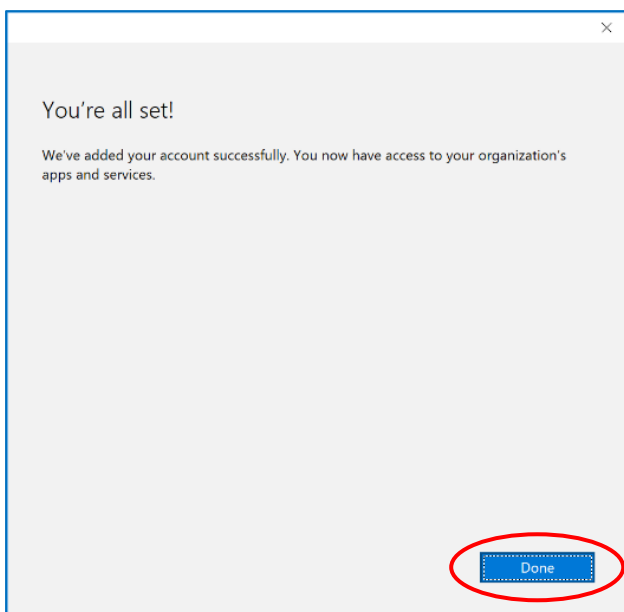
[Change my password](#)

The username may appear in the Username field in the Managed Internet Service screen.

If not, please enter your username, password, accept the terms and conditions, and **Sign in**.

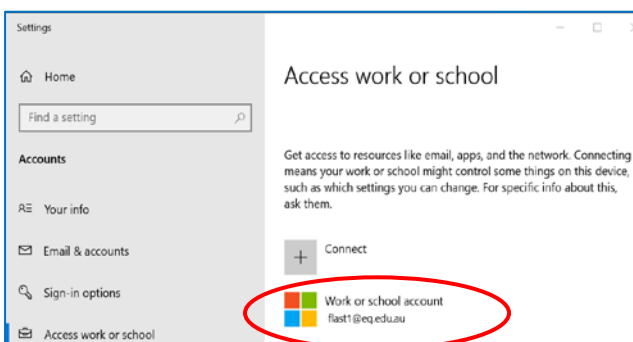


### Step 7



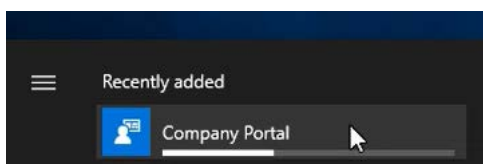
Please select **Done**.

### Step 8



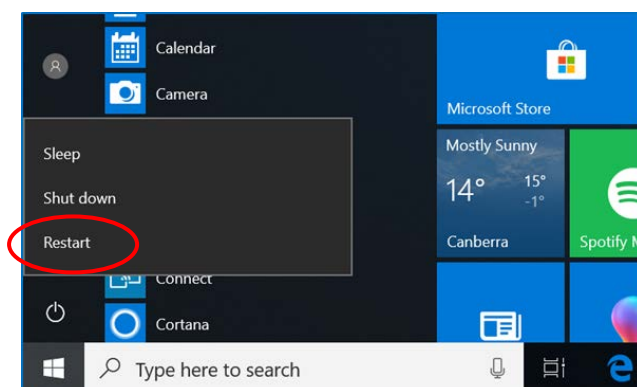
Check your account has been added. Your account details will be displayed.

### Step 9

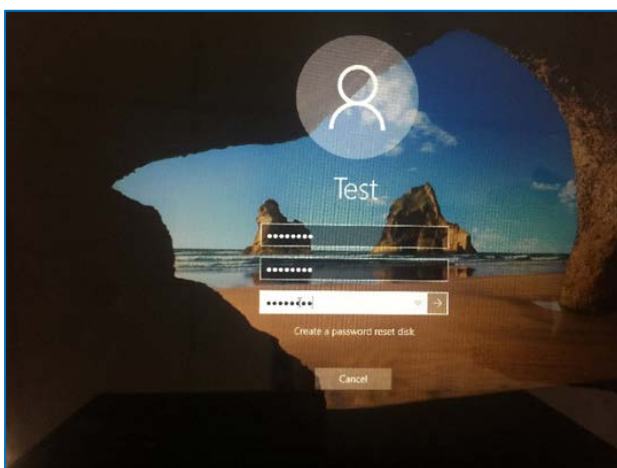


Select the Windows icon at the bottom left-hand corner. Wait for the Company Portal app to install.



**Step 10**

Please restart your device. Select the **Windows icon** at the bottom left-hand corner, then the **power symbol** and then **restart**.

**Step 11**

Settings will differ for everyone and you may be prompted to change your password. If you are, please do so.

When your device has restarted, the Intune set up is completed. It may take up to 15 minutes to finish installing. You can use your device in the meantime but please keep it connected to the internet.

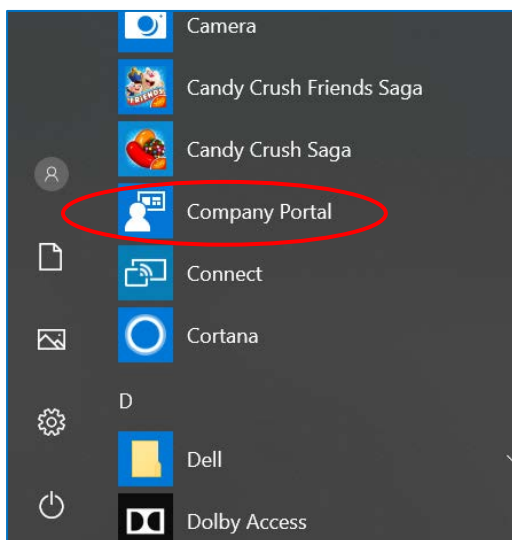
You are now ready to install the apps your school has recommended.





## How to install an app

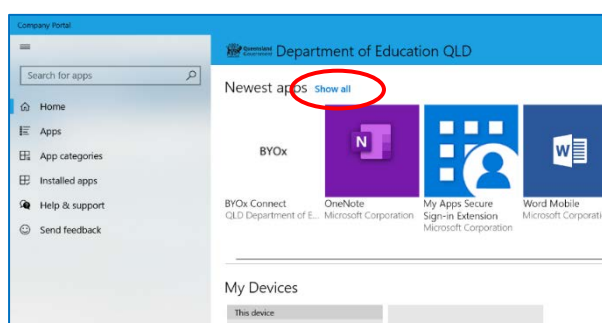
### Step 1



To install the apps, please select the **Windows icon** at the bottom left hand corner of the screen, and then open the **Company Portal application**.

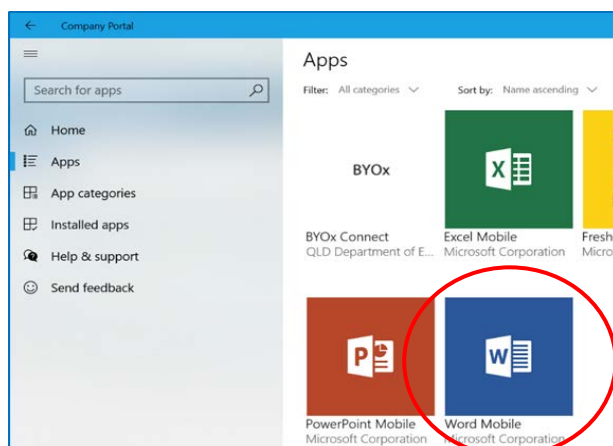
If requested, sign in with your school user name and password.

### Step 2



Select **Show all** to see the apps your school has indicated you require.

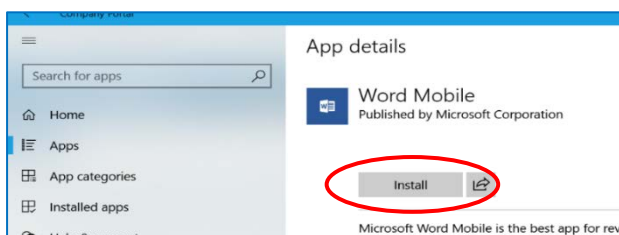
### Step 3



Select an app to install. In this example, we will use **Word Mobile**.

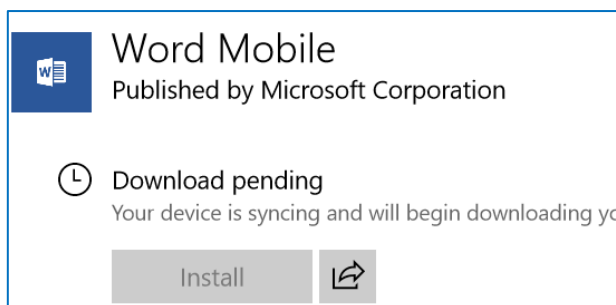


**Step 4**



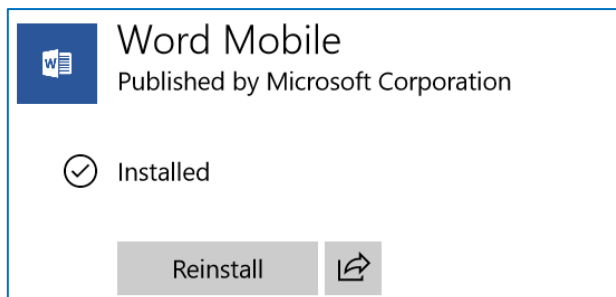
Select the **Install** button.

**Step 5**



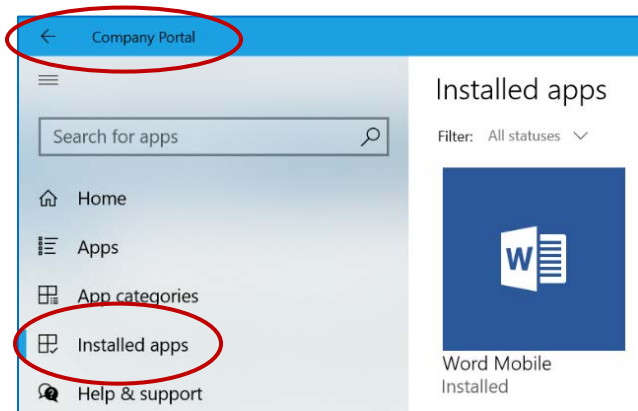
A downloading message will be displayed during installation.

**Step 6**



The app has finished installing.

**Step 7**



To check your app has installed, select Installed apps and see it in the list.

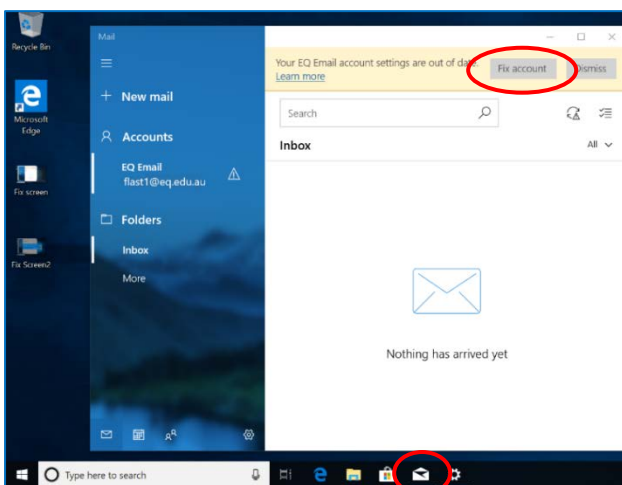
Click the back arrow **Company Portal** to install additional apps, repeating Steps 2 to 7.

Next, you can set up your school mail account.



# How to set up mail

## Step 1



Open your mail app by selecting the **mail icon** at the bottom of the screen.

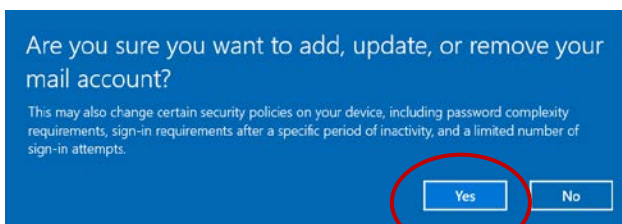
You will see your school EQ Email account listed.

If you do not, please note it may take up to 20 minutes, depending on your device and internet connection.

There are some cases

where it has taken up to a day to process. Please select **Fix Account**.

## Step 2



A message will then confirm if you want to make changes to your mail account, select **Yes**.

## Step 3



The All done! screen will be displayed. Select **Done**.

Your mail account has been set up for use and you can now send and receive emails from your school mail account.

Your device is now ready for school. If you need help with installing Intune, an app or mail account, please see your school for assistance.

