

# BYOxLink – How to Guide


## Use guest Wi-Fi service to connect a student's MacOS device

This document explains how a student can connect a MacOS device to the school guest Wi-Fi network (EQGUEST) so staff can then complete the Intune enrollment on their device.

The guest Wi-Fi connection is limited and only lasts for eight (8) hours. You may not be able to access some resources such as shared network drives, printers or local school websites through the guest Wi-Fi.

Note: Sign on will only work with a valid school email address (<username>@eq.edu.au>). You should use your existing school EQ email address.

### Step 1. Select the guest Wi-Fi network

- a. Select the  Wi-Fi icon in the menu bar at the top of the screen
- b. Select the EQGUEST Wi-Fi network.
- c. A sign on page will be displayed.



## Step 2. Sign on to the guest Wi-Fi network

- A Sign on page will be displayed
- Enter your EQ email address and password
- Read and accept the Acceptable Use Policy by ticking the box
- Select Sign On.

Join "cEQQUEST"

Email: Flast1@eq.edu.au

Password: \*\*\*\*\*

The Department of Education's information and communication technology (ICT) network is available for approved purposes only. When using the ICT network you must act at all times lawfully and in line with the rules that apply to you which includes:

- The Code of Conduct
- Department's Standard of Practice
- Public Sector Ethics Act 1994 (Qld)
- Crime and Corruption Act 2001 (Qld)
- Information Privacy Act 2009 (Qld)
- Queensland Government Chief Information Office's (QGCIIO) Information security policy, framework and standards
- Departmental ICT policies and procedures.

Unauthorised access and use may result in disciplinary action being taken against you. If the department reasonably suspects you are using the ICT network in a manner that constitutes a crime, the department will refer the matter to the police.

You must not attempt to access systems for which you are not authorised, share or let others use your unique username and passwords, or disclose passwords to anyone (even in periods of absence).

If you need more information about acceptable use of the department's ICT network contact your manager or director.

By logging in to this device, you demonstrate you have read and understood this statement.

☒ I agree to the terms and conditions

Sign On

guest.qed.qld.gov.au

- A success screen will display, close the window.

Join "cEQQUEST"


School Guest Wi-Fi flast1 @eq.edu.au

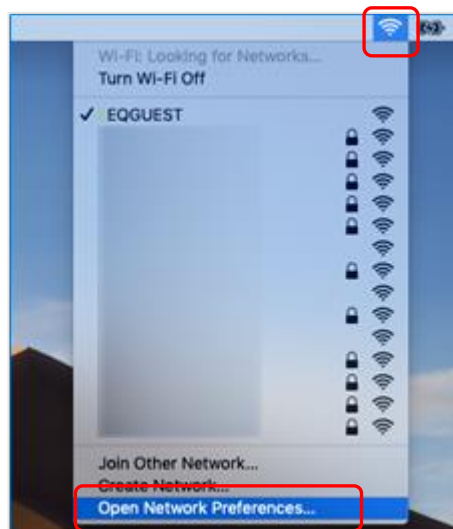
**Success**

Congratulations you are now connected to the internet. If you have an Education Queensland Account please follow the below guides on how to enrol your device into Intune to be granted:

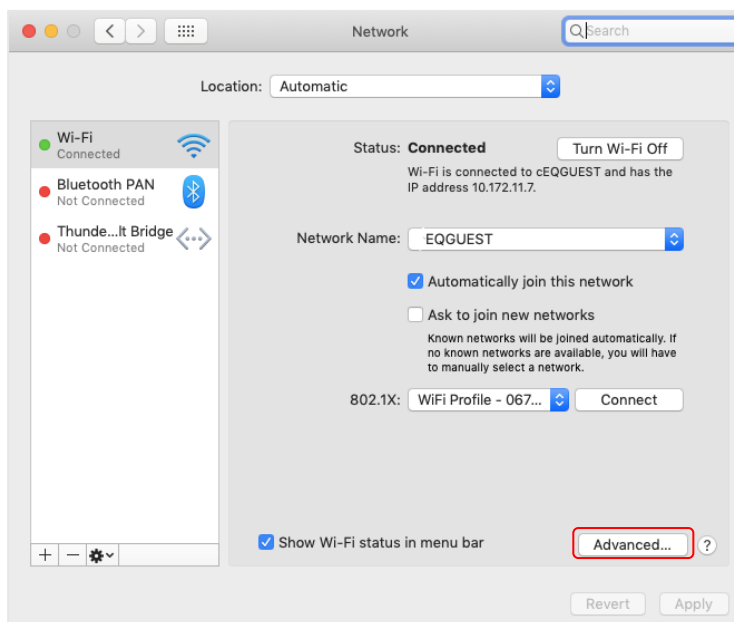
- Greater than 24hr access to School Wi-Fi
- Automatic Setup of EQ email
- Access to a list of school endorsed applications and websites applicable for your device.

## Step 3. Change Wi-Fi Proxy settings

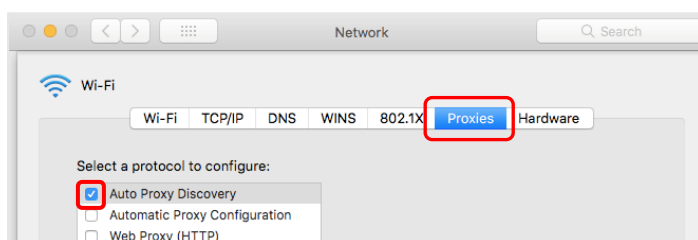
- Select the  Wi-Fi icon in the menu bar at the top of the screen
- Select Open Network Preferences.



c. Select Advanced.

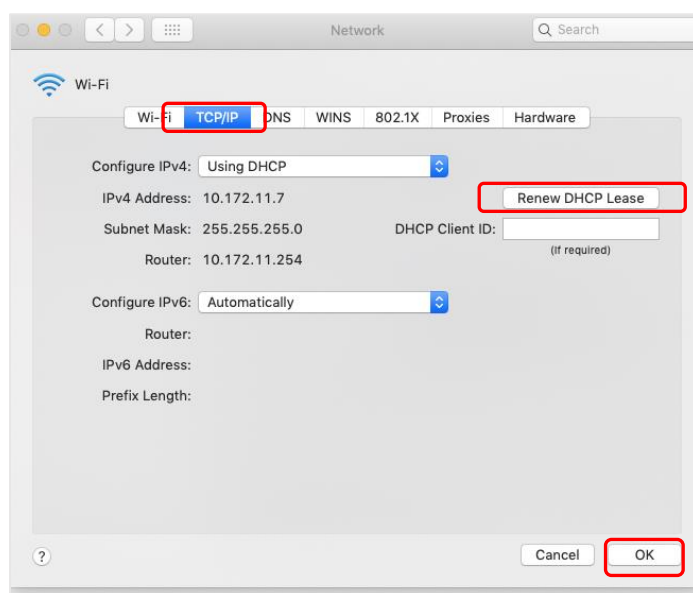


d. Select Proxies and then select the Auto Proxy Discovery checkbox.

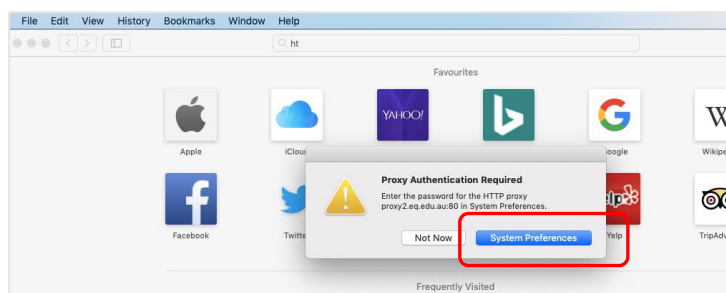


e. For High Sierra Mac devices only, in the same screen, select TCP/IP and then select "Renew DHCP Lease" on the right hand side of the screen.

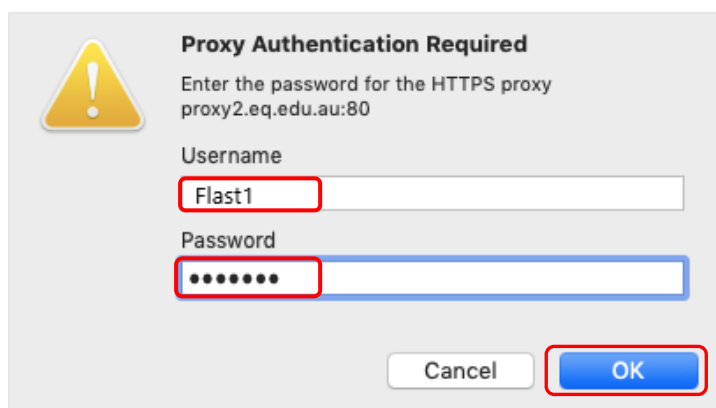
f. Select OK.



- f. You will be prompted for further credentials when your device tries to access the internet. Open the internet browser, Safari.
- g. Select System Preferences.



- h. Enter your username and password given to you by your school contact. Select OK.



- i. If you time out or close the browser, you will need to go through steps 'a' to 'c' again.
- j. In your internet browser, check your internet is working. If your internet is not working, please contact your school IT support staff for assistance.

## Step 4. Next steps

To access school email, learning applications, printers and shared network drives and applications, you will need to enrol your device into Intune. Refer to:

[How to Guide - MacOS - Getting your device ready for school](#)

Or

[Intune installation video for Mac devices](#)

to complete this process.



# Getting your BYO device ready for school: Intune

## Mac version

Intune is a secure mobile management system that allows you to access the school's network.

These instructions will show you how to enrol a BYO Mac device into Intune and install an application. This process may take up to 15 minutes to complete.

Before you start, please have ready the email address and password that has been supplied to you by the school. If you do not have this information, you will not be able to successfully complete the installation. Please contact your school to obtain these details.

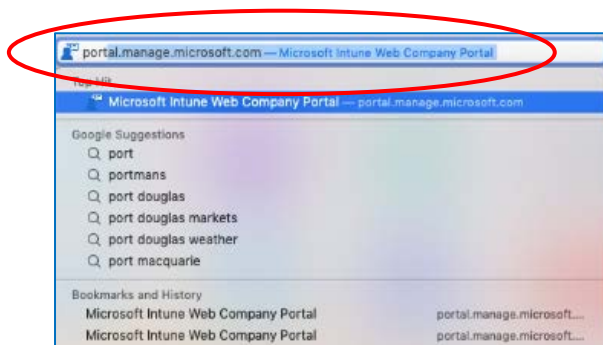
These instructions are for High Sierra or later versions of MacOS. You may find some of the screens look different to the ones provided here if you have an older version of MacOS or there are changes made to Intune.

If the installation fails at any time, please re-open the Intune app and try again.

**Please note:** These instructions are provided for testing purposes only as part of a pilot project. If you have any problems with installing Intune or using it afterwards, please contact your school for assistance.

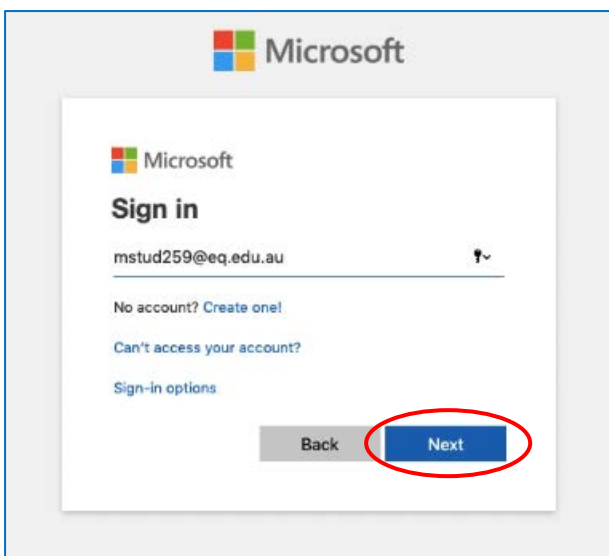
## How to install Intune

### Step 1

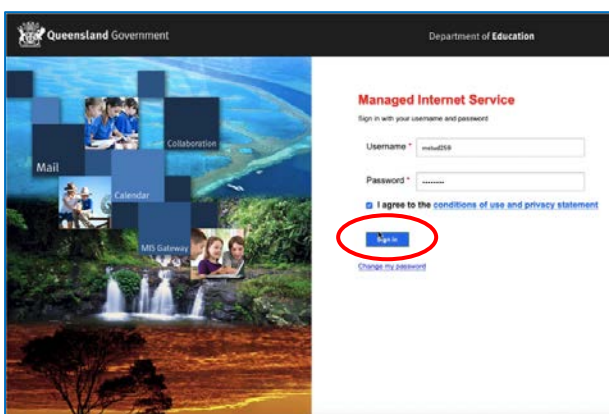


To start, connect to the internet, open **Safari** and type in **portal.manage.microsoft.com**



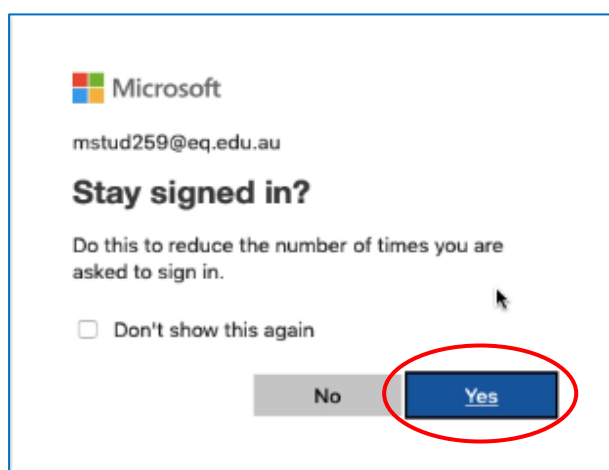
**Step 2**A screenshot of the Microsoft sign-in page. The Microsoft logo is at the top. Below it, the text "Sign in" is displayed. The email address "mstud259@eq.edu.au" is entered in the text box. Below the text box are links for "No account? Create one!", "Can't access your account?", and "Sign-in options". At the bottom, there are two buttons: "Back" and "Next". The "Next" button is circled in red.

Enter the **@eq.edu.au** email address you were provided by your school and select **Next**.

**Step 3**A screenshot of the Queensland Government Managed Internet Service sign-in page. The page has a header with the Queensland Government logo and "Department of Education". The main content area has a background image of a waterfall and a grid of icons for Mail, Collaboration, Calendar, and M365 Business. On the right, there is a sign-in form with fields for "Username" (containing "mstud259") and "Password". Below the password field is a checkbox labeled "I agree to the conditions of use and privacy statement" and a "Sign in" button. The "Sign in" button is circled in red. There is also a link for "Change my password" below the sign-in button.

Your username may auto fill or you will need to enter the school username and password you were provided.

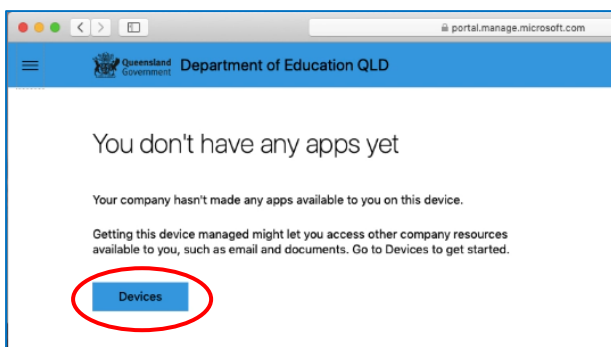
Then accept the terms and conditions and select **Sign in**.

**Step 4**A screenshot of the Microsoft "Stay signed in" prompt. The Microsoft logo is at the top. Below it, the email address "mstud259@eq.edu.au" is displayed. The heading "Stay signed in?" is followed by the text "Do this to reduce the number of times you are asked to sign in." Below this text is a checkbox labeled "Don't show this again". At the bottom, there are two buttons: "No" and "Yes". The "Yes" button is circled in red.

A prompt will pop up asking if you want to stay signed in, select **Yes**.

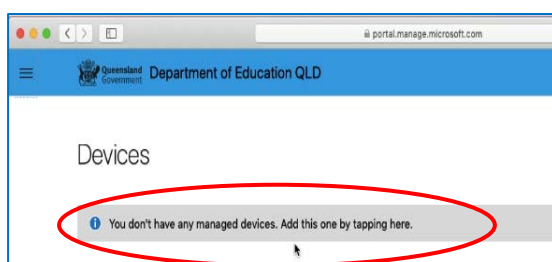


### Step 5



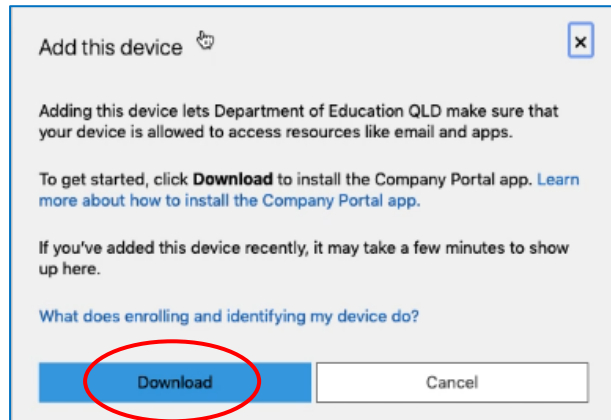
The Intune company portal will open, select **Devices**.

### Step 6



Then, select the option that appears. This will either be **You don't have any managed devices** or **Tap now to tell us which device you are using or add a new device**.

### Step 7

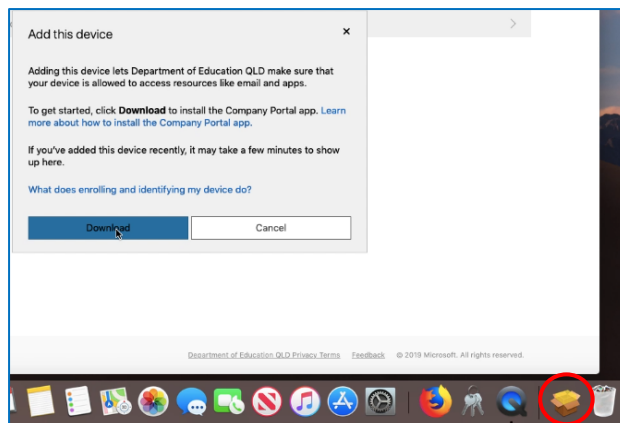


Please select **Download**. It may take a few seconds to complete.



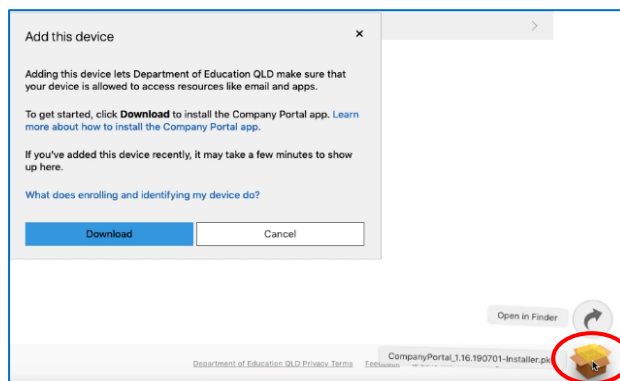


## Step 8



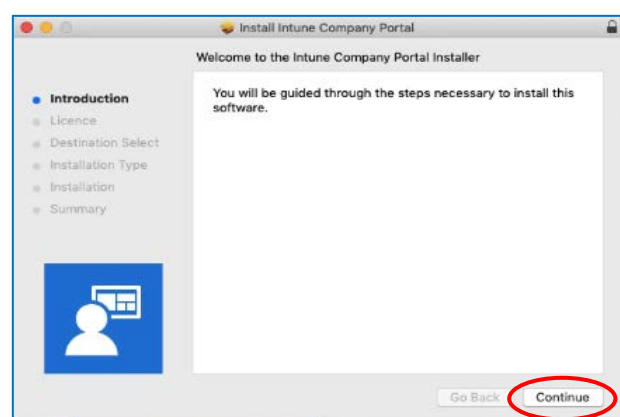
Select the **Open box icon** at the bottom of your screen.

## Step 9



Then select the **Open box icon** next to the Company Portal Installer pkg file.

## Step 10

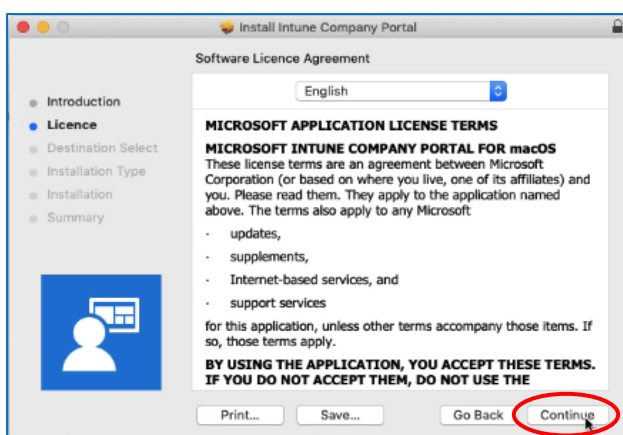


Please select **Continue**.



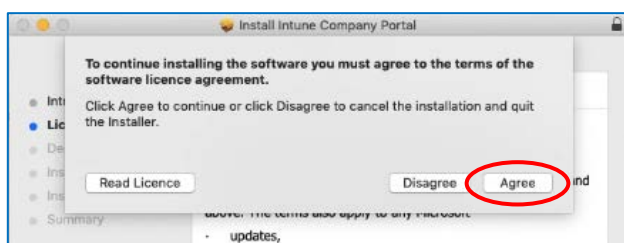


### Step 11



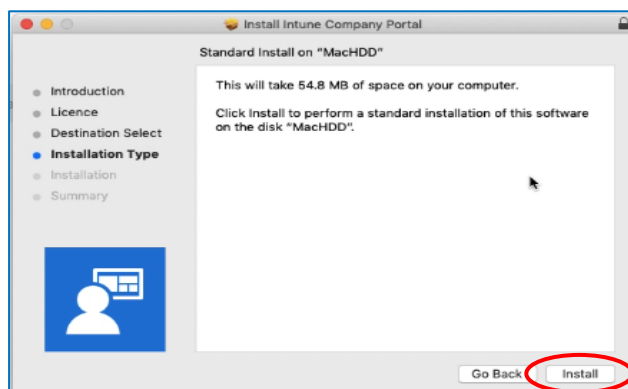
Please read the license terms and then select **Continue**.

### Step 12



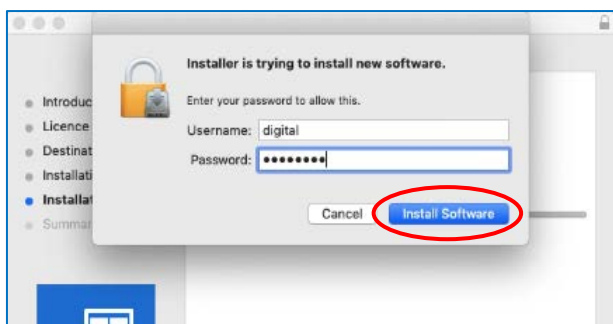
Select **Agree** to accept the license terms in the pop-up window.

### Step 13

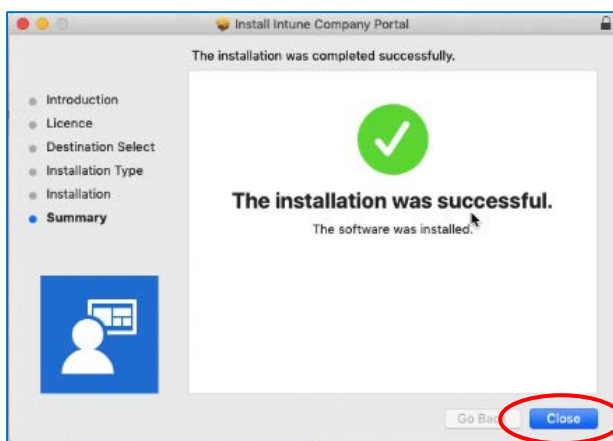


Next, select **Install**.

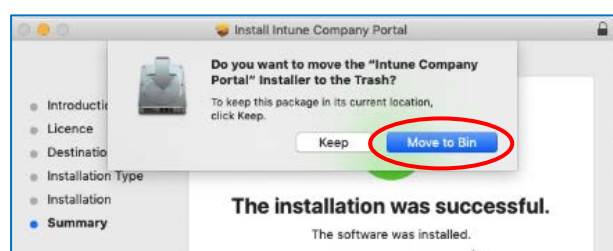


**Step 14**

Please enter your username, password of your device and select **Install Software**.

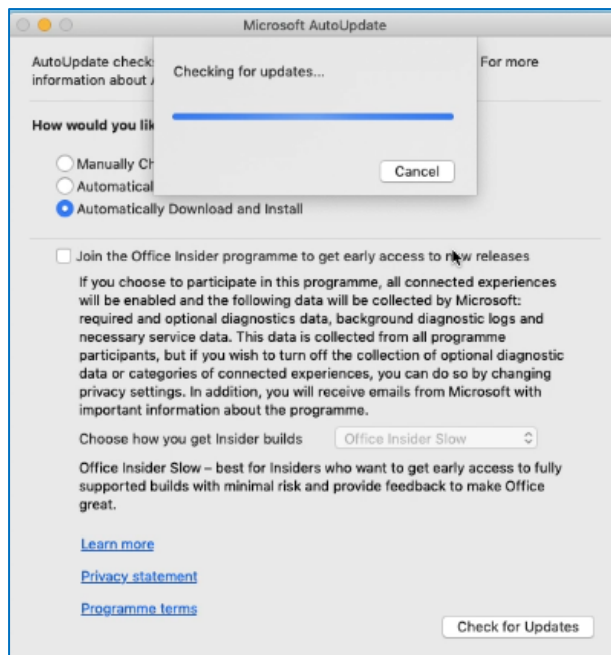
**Step 15**

When the installation has finished, select **Close**.

**Step 16**

Once the program has completed installing, please select **Move to Trash** or **Bin** option.



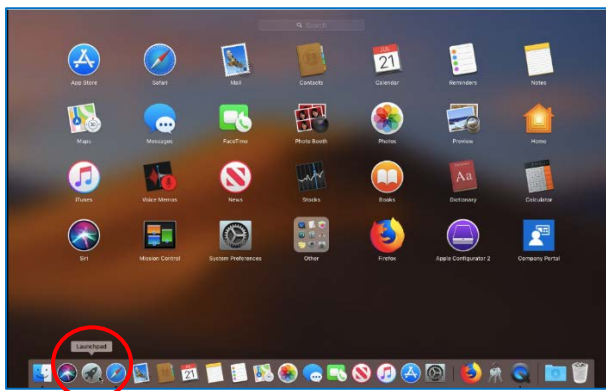
**Step 17**

The Microsoft auto update will appear. Select **Install** if there are updates waiting.

Otherwise, select **OK**.

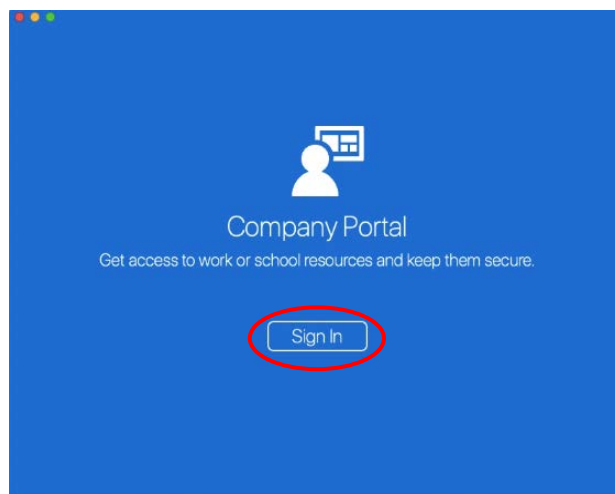
You may need to repeat this step a few times.

Once there are no more updates, you can close the Microsoft Auto Update program.

**Step 18**

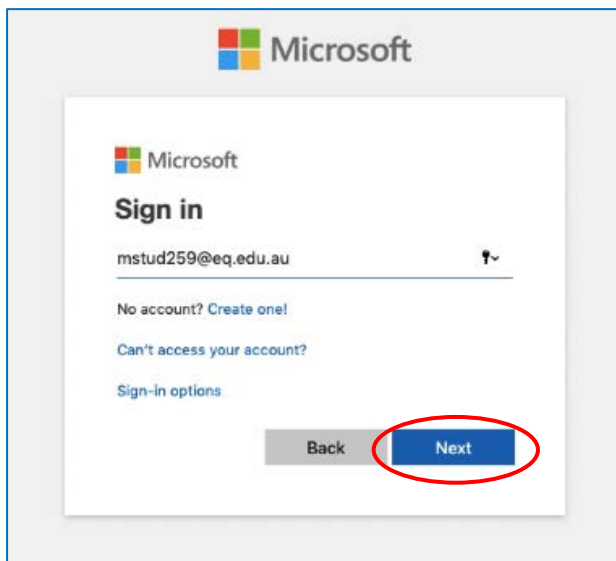
Next, you need to enrol into Intune.

Select **Launchpad** and then select the **Company Portal** app.

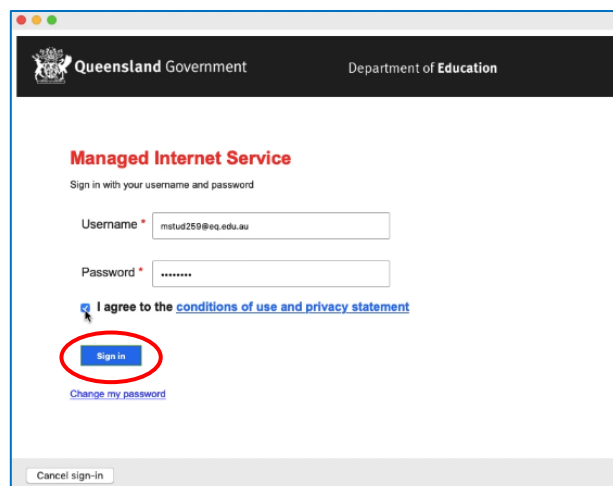
**Step 19**

Then, select **Sign In**.



**Step 20**A screenshot of the Microsoft Sign in screen. The Microsoft logo is at the top. Below it, the text "Sign in" is displayed. A text input field contains the email address "mstud259@eq.edu.au". Below the input field, there are links for "No account? Create one!", "Can't access your account?", and "Sign-in options". At the bottom, there are two buttons: "Back" and "Next". The "Next" button is highlighted with a red circle.

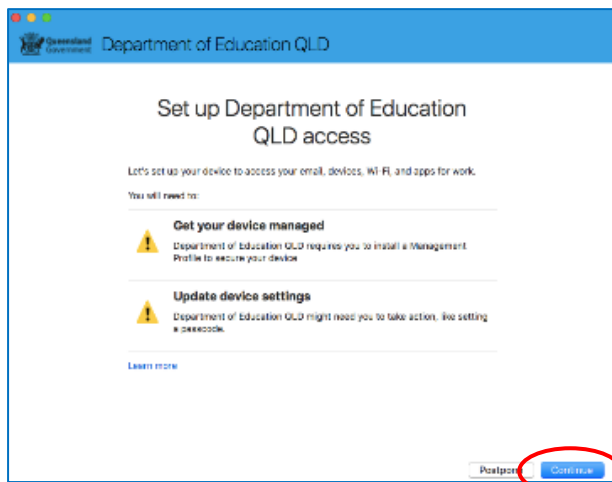
If presented with the Microsoft Sign in screen, enter your supplied EQ email address. Then, select **Next**.

**Step 21**A screenshot of the Queensland Government Managed Internet Service sign-in screen. The header shows the Queensland Government logo and "Department of Education". The main heading is "Managed Internet Service". Below it, the text "Sign in with your username and password" is displayed. There are two input fields: "Username" with the value "mstud259@eq.edu.au" and "Password" with masked characters. Below the password field, there is a checkbox labeled "I agree to the conditions of use and privacy statement". The "Sign in" button is highlighted with a red circle. At the bottom, there is a "Cancel sign-in" button.

Enter the username, password and accept the terms and conditions. Then select **Sign In**.

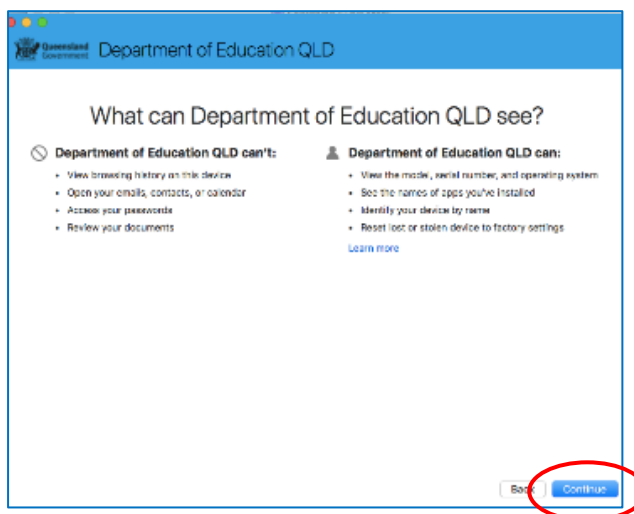


## Step 22



Then, select **Continue**.

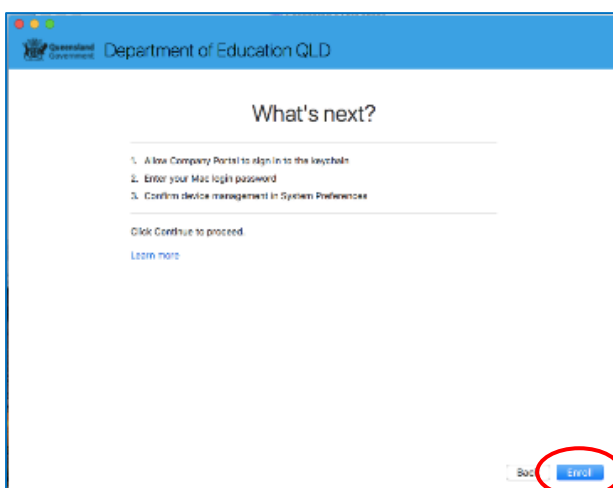
## Step 23



This explains what your school IT administrator can and cannot see on your Mac device.

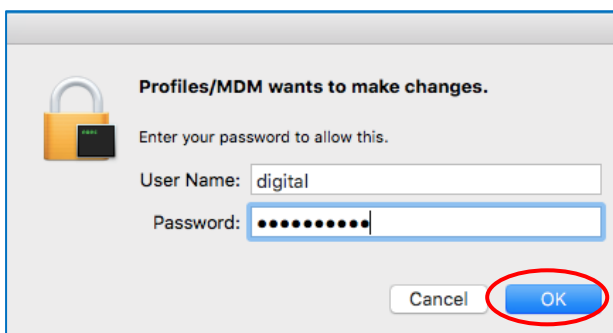
Select **Continue**.



**Step 24**

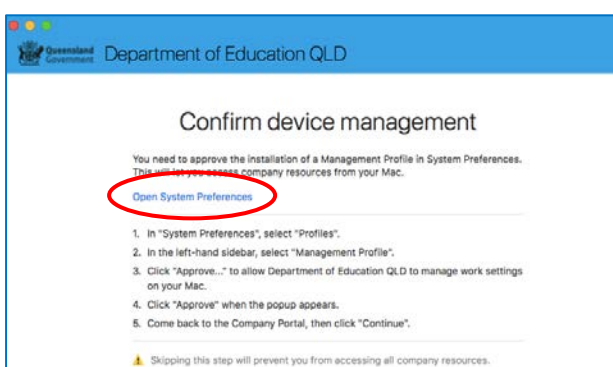
This screen outlines the next steps. When **What's next?** appears, select **Enroll** to finish the installation.

This may take a few minutes to complete.

**Step 25**

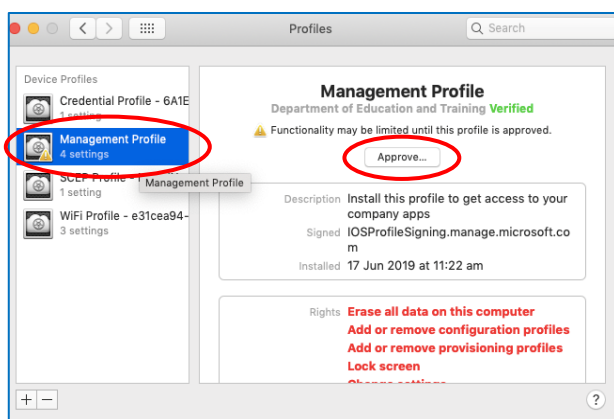
Please enter the username and password for your device and select **OK**.

It may take a few minutes for the management profile to be installed.

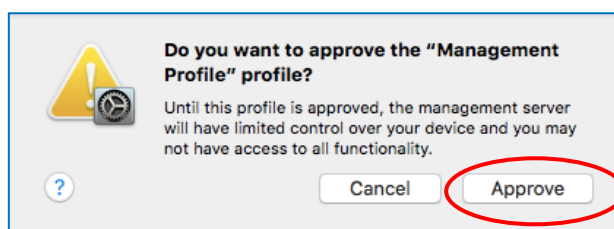
**Step 26**

Then, select **Open System Preferences**.

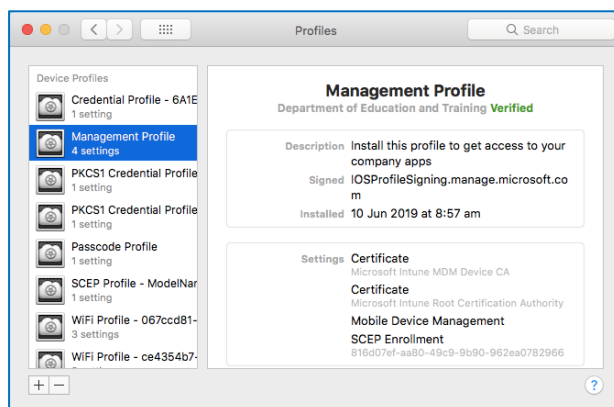


**Step 27**

Select Management Profile  
and then **Approve**.

**Step 28**

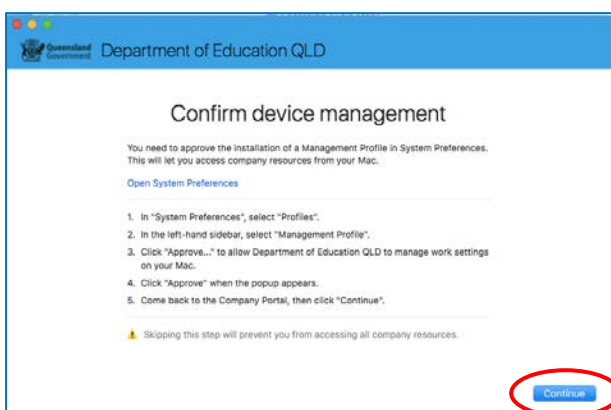
Confirm you want to approve the Management Profile and select **Approve**.

**Step 29**

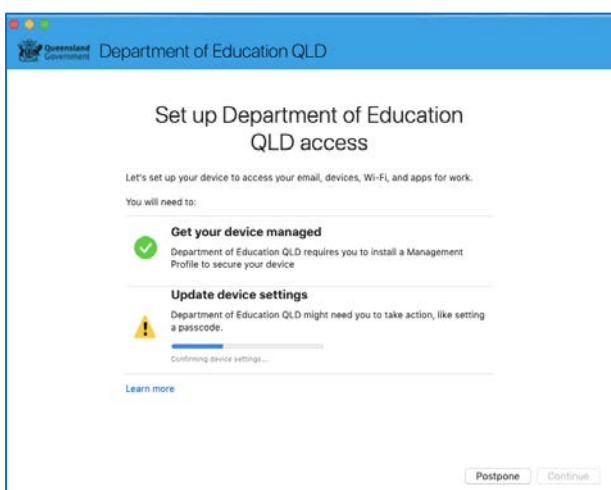
The system preference screen will be displayed and you can close this window.



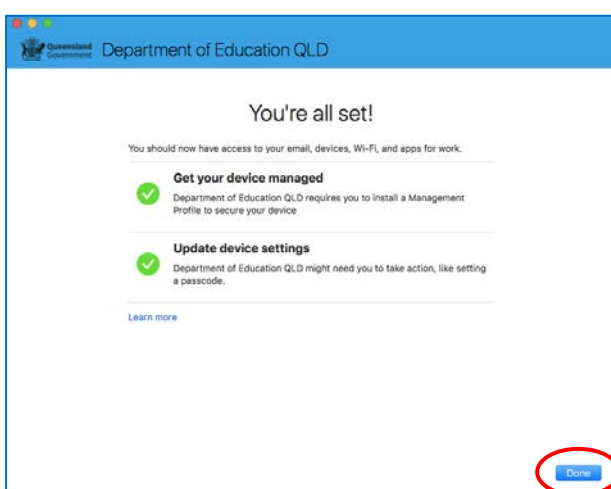


**Step 30**

The Intune company portal app window will still be open. Select **Continue**.

**Step 31**

Wait as the Company Portal updates the device settings.

**Step 32**

When the tick appears against Update device settings, your device has finished enrolling into Intune. Select **Done**.

It may take up to 15 minutes to finish installing. You can use the device in the meantime but please keep it connected to the internet.

Close the Company Portal.

You have now finished installing Intune.

